



Genotyping protocol

Timm50

IR00002582 / E70

(ICS internal reference)

This report has been prepared by: **Valérie Rousseau**
genotyping@igbmc.fr

This report has been validated by: **Sylvie Jacquot, PhD, Head of Genotyping Service**
33 (0)3 88 65 57 44
genotyping@igbmc.fr

The first version of this report was finalized the: 14 Mar 2012

For any question, please contact:

Institut Clinique de la Souris - ICS - Mouse Clinical Institute
1 rue Laurent Fries, BP 10142
67404 Illkirch Cedex, France
Email: genotyping@igbmc.fr
Web site: <http://www-mci.u-strasbg.fr/>

TABLE OF CONTENTS

Table of contents2

1. Genotyping protocol and data2

 1.1. Genotyping strategy2

 1.2. PCR protocol4

 1.3. Picture of genotyping with various alleles5

2. Cre and Flp genotyping method6

 2.1. Cre and Flp genotyping6

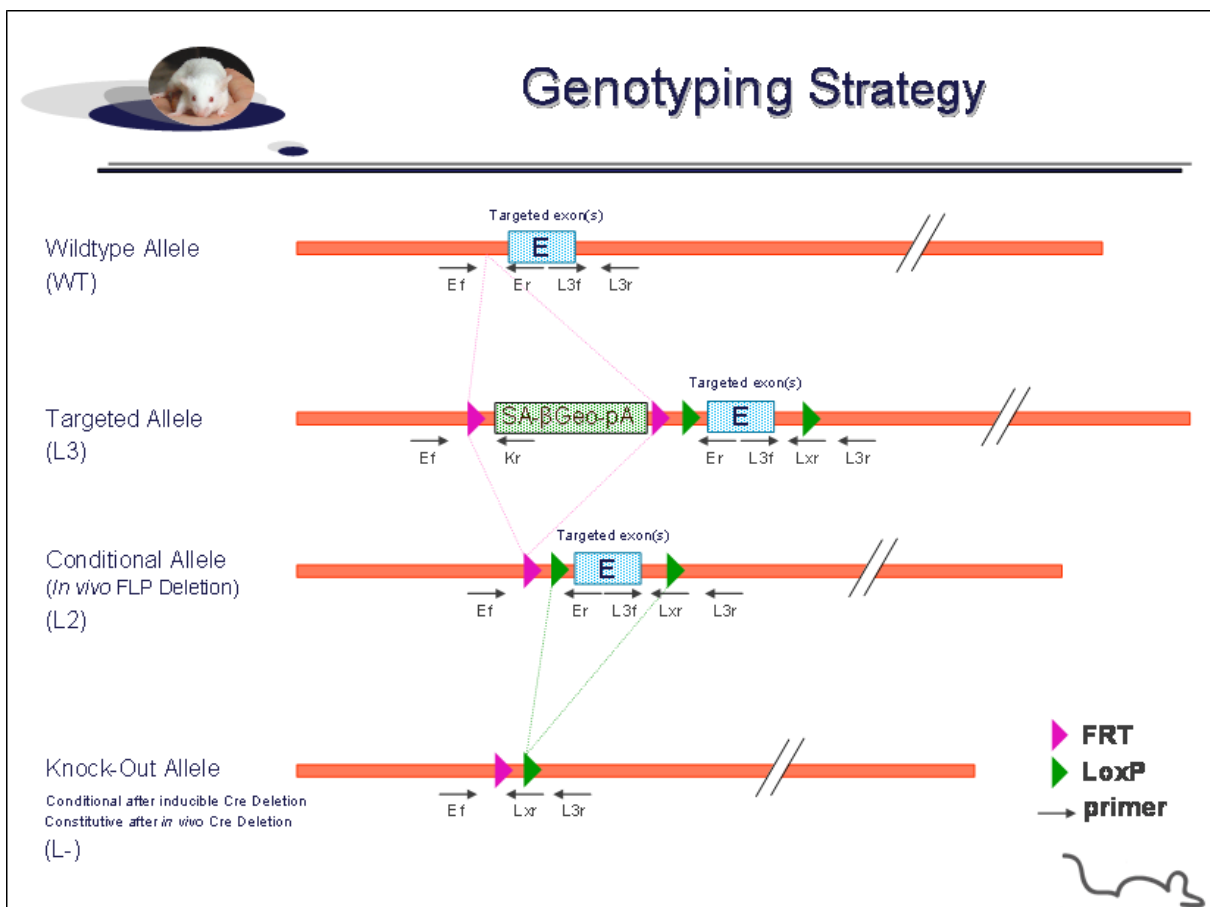
 2.2. PCR Protocol7

1. Genotyping protocol and data

This section describes the condition used at the Mouse Clinical Institute (ICS) to genotype your **Timm50** Constitutive Knockout / Conditional Knockout (KO-cKO) project.

1.1. Genotyping strategy

The map below describes the position of the primers used for genotyping for each possible allele.



Sequence of primers used for genotyping:

Position	Primers	Sequence
Ef	4572	GGTGCCGGGAGAGGTACCTGT
Er	4577	AAAGGGACAGAGGGCACCCAAGG
Kr	3209	CCAACAGCTTCCCCACAACGG
L3f	4574	GCTCCGAGGGTCCCAGCTATGC
L3f ²	4573	CGGTTTGCTCGGAGCTGGTGGG
L3r	4575	CGAACCGCAGTCCCTTGTCCCA
L3r ²	4576	AGGATTCCAAGTGGGCTGGGGC
Lxr	3254	TTATCATTAATTGCGTTGCGCCATC

². For a selected position, a second primer was designed

PCR fragments expected size (bp):

Region analyzed	Primers used	Position on the primer (see the map above)	Targeted allele (KO allele) (L3)	cKO allele (L2)	KO allele (L-)	WildType allele (WT)
5' part of the selection marker	4572-3209	Ef / Kr	423	---	---	---
Presence of the distal loxP	4574-4575	L3f / L3r	363	363	---	358
Distal loxP specific PCR	4573-3254	L3f2 / Lxr	234	234	---	---
Excision of the selection marker	4572-4577	Ef / Er	7375*	471**	---	333
Excision of the floxed exon(s), i.e. knock out	4572-4576	Ef / L3r2	8253*	1349*	523**	1206**

*: this PCR product will not be observed using our PCR genotyping conditions (see description below)

** : this PCR is only verified if mice are generated

---: no Amplicon should be obtained

1.2. PCR protocol

This section describes the composition of the mix and cycling conditions used for genotyping.

Reagents:	Volume:
- FastStart PCR Master (Roche)	7.5µl
- DNA (50ng/µl)	1.5µl
- 5' primer (100 µM)	0.06µl
- 3' primer (100 µM)	0.06µl
- Sterile H ₂ O	up to 15 µl

Cycling conditions:

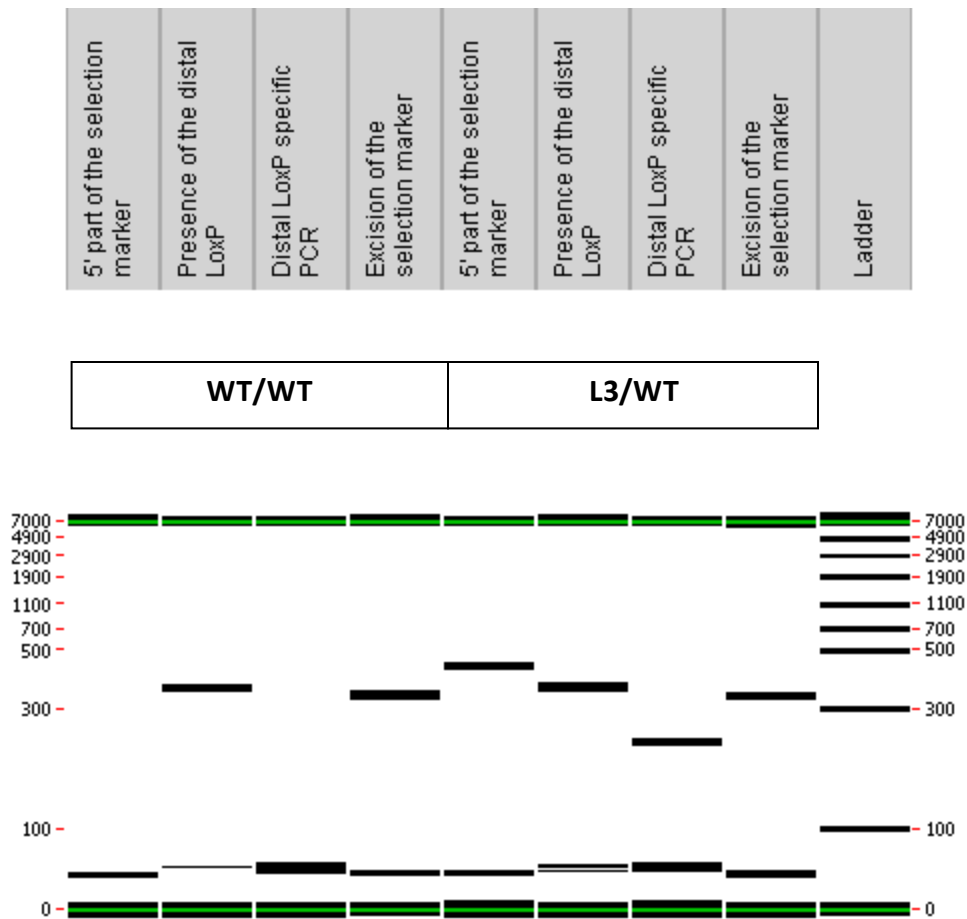
Temp	Time	#Cycles
95°C	4min	1
94°C	30s	34
62°C	30s	
72°C	1min	
72°C	7min	1
20°C	5min	1

NB: These PCR conditions have been optimized for high-throughput genotyping. Adaptation to small-scale may be required.

1.3. Picture of genotyping with various alleles

Analysis of PCR products pattern was not done by gel electrophoresis but using LabChip® 90 microfluidic apparatus. PCR products were run on the HT DNA 5K LabChip® 90 Assay Kit.

Representative genotyping picture



Note that as this technology is more sensitive than gel analysis, non specific signals and/or primer dimers may be visible on the picture.

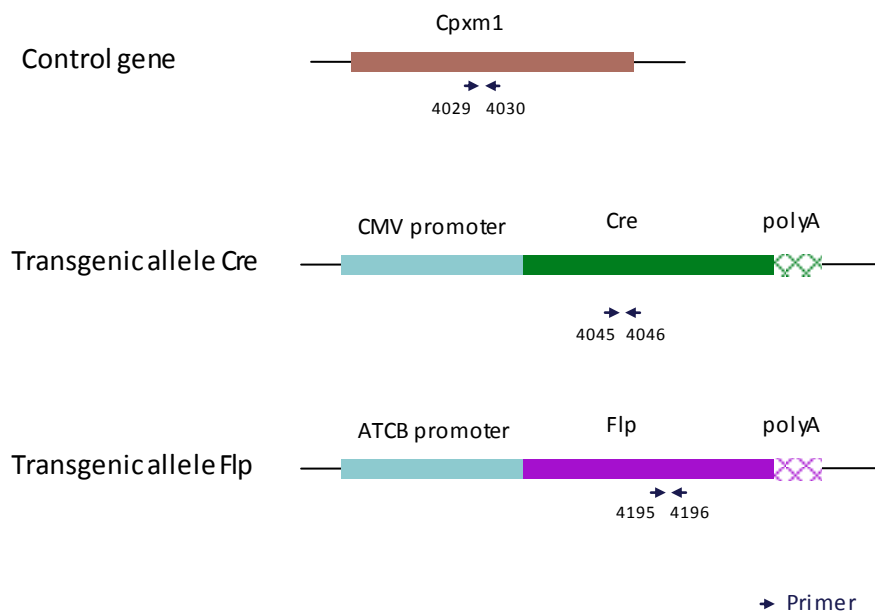
2. Cre and Flp genotyping method

The protocol used to segregate the cre and/or flp transgene is indicated below.

Detection of cre transgene and flp transgene is done using a multiplex assay: primer pairs were designed for each gene and for a positive control (Cpxm1 gene).

2.1. Cre and Flp genotyping

Schematic representation of the genotyping strategy



Sequence of primers used for genotyping:

Primers	Sequence
4029	ACTGGGATCTTCGAACTCTTTGGAC
4030	GATGTTGGGGCACTGCTCATTACCC
4045	CCATCTGCCACCAGCCAG
4046	TCGCCATCTTCCAGCAGG
4195	TCTTTAGCGCAAGGGGTAGGATCG
4196	GTCCTGGCCACGGCAGAAGC

PCR fragments expected size (bp):

Primer pair	4045-4046	4195-4196	4029-4030
Region analyzed	Middle part of Cre transgene	Middle part of Flp transgene	Cpxm1 control gene
Control gene	/	/	446
Tg allele	281	328	/

2.2. PCR Protocol

This section describes the composition of the mix and cycling conditions used for genotyping.

Reagents	Volume
FastStart PCR Master (Roche)	7.5 μ l
DNA (50ng/ μ l)	1.5 μ l
5' primer (100 μ M)	0.05 μ l
3' primer (100 μ M)	0.05 μ l
Sterile H ₂ O	up to 15 μ l

Cycling conditions are identical to those described in chapter 1.2