

EMMA ID: 05678

Gene: *Rsu1*

Common name: *Rsu1 (Ras suppressor protein 1)*

Genotyping Information

Genotyping by end-point PCR based on gel is composed of a genespecific short range PCR using primers on wild type allele and a mutant allele-specific short range PCR. The combined results show the genotype of the mice. For example: mutant positive, wild type positive = Heterozygous.

PCR primer pairs and expected size bands

Assay	Forward Primer	Reverse Primer	Expected Size Band (bp)
Wildtype	Rsu1 CD26 U27157	Rsu1 CD31 L27752	595
Mutant	Rsu1 CD26 U27157	Rsu1 RB8 L81	450

Primer sequences

Primer Name	Sequence 5' --> 3'
Rsu1 CD26 U27157	GGGTCCAGGCTCTATGAG
Rsu1 CD31 L27752	GATGGGCATTTACTCTAACAC
Rsu1 RB8 L81	CAACTCCGCAAACCTCCT

PCR setup (Qiagen, Hot Start Plus)

Component	Volume (µl) 1x	Final conc.
DNA (~ 50-100 ng)	2	
Q-Solution (5x)	2,5	0,5
PCR-Buffer (10x)	2,5	1
DNTP mix (10 mM)	0,5	0,2
MgCl ₂ (25 mM)	1,5	1,5
Primer 1 (10 pmol/µl)	1	0,4
Primer 2 (10 pmol/µl)	1	0,4
Taq Polymerase (5 U/µl)	0,3	0,06
H ₂ O*	13,7	
Final volume	25	

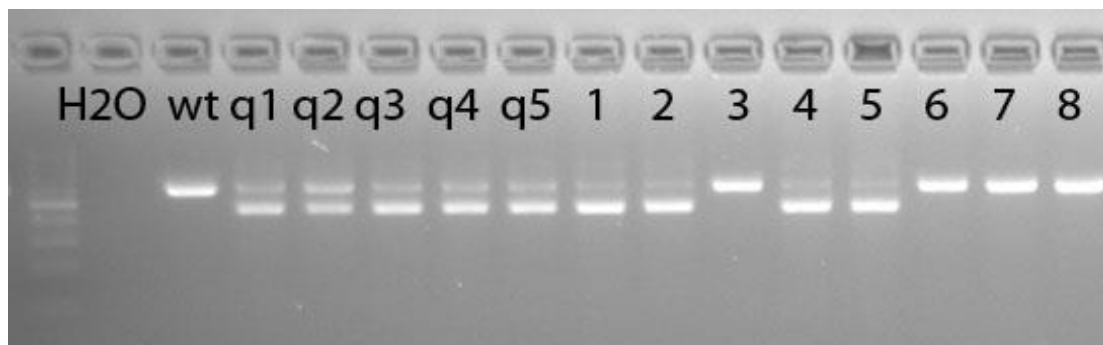
* The amount of H₂O is adjusted with the number of primer.

Amplification conditions

PCR Settings	Temperature (°C)	Time	# of cycles
1 Denaturation (Melting)	95°C	5 min	1
2 Amplification (Melting, Annealing, Polym.)	94°C	30 sec	39
	59°C	45 sec	
	72°C	45 sec	
3 Polymerisation	72°C	10 min	1
4 Cooling	4°C	hold	1

These PCR conditions have been optimized for our methods and preparation kits. Adaptions may be required.

Gel Image



Separated by gel electrophoresis on a 2% agarose gel.