



Arcn1 (IR00002790 / E117 ICS internal reference) mouse line genotyping protocol

Table of contents

Table of contents	1
1. Genotyping protocol and data	2
1.1. Genotyping strategy	2
1.2. PCR protocol	3
1.3. Picture of genotyping with various alleles	4
2. Cre and Flp genotyping method	5
2.1. Cre and Flp genotyping	5
2.2. PCR protocol	6

For any question, please contact:

Mouse Clinical Institute – Institut Clinique de la Souris (ICS)

ICS genotyping service

1 rue Laurent Fries, BP 10142

67404 Illkirch Cedex France

Email: genotyping@igbmc.u-strasbg.fr

This protocol has been validated by Pauline Cayrou.

1. Genotyping protocol and data

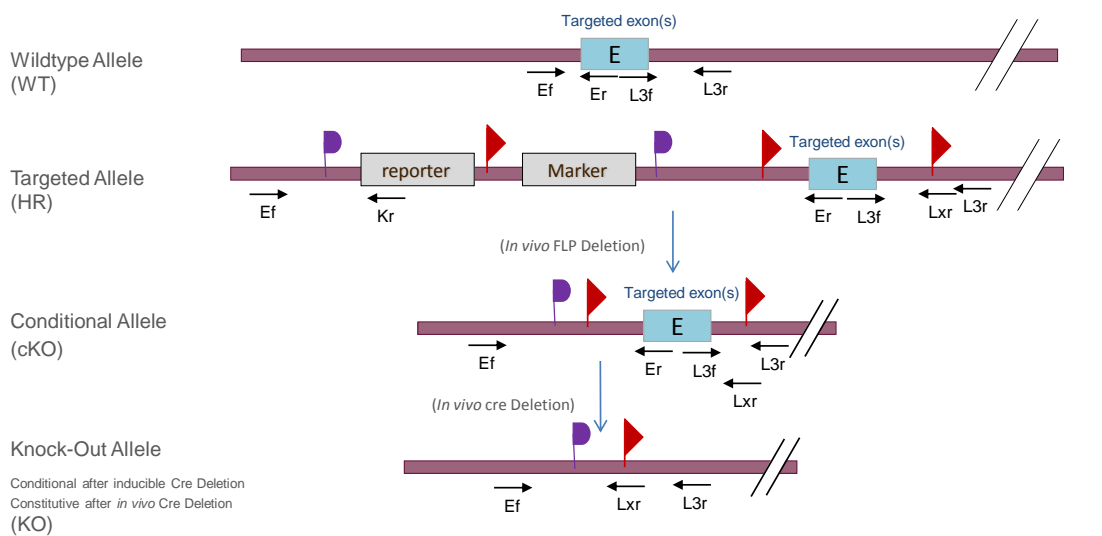
This section describes the condition used at the Mouse Clinical Institute (ICS) to genotype your **Arcn1** Constitutive Knockout / Conditional Knockout (KO-cKO) project.

1.1. Genotyping strategy

The map below describes the position of the primers used for genotyping for each possible allele.



KO-cKO-pc Genotyping strategy





Genotyping protocol

Arcn1 (IR00002790/ E117 ICS internal reference)

Sequence of primers used for genotyping

Position	Primers	Sequence
Ef	5070	AATGCCTGCCTGCTTGCTTGC
Ef	5071	TGCATTCTATACAAGCACTCTGTGCGCT
Er	5074	GAACGAGTCTGCATTCTCCTTTGGA
Kr	3210	CCTGTCCCTCTCACCTTCTACC
L3f	5073	ATTGAAACTGATAAA CCAAAGTGGCG
L3r	5072	GGCTTCTCAGAGGCACAAA TACAATGA
Lxr	3254	TTATCATTAATTGCGTTGCGCCATC

PCR fragments expected size (bp):

Region analyzed	Primers used	Position on the primer (see the map above)	Targeted allele (KO allele) (L3)	cKO allele (L2)	KO allele (L-)	WildType allele (WT)
5' part of Promoter-Driven Cassette	5071-3210	Ef / Kr	408	---	---	---
Presence of the distal loxP	5073-5072	L3f / L3r	437	437	---	423
Distal loxP specific PCR	5073-3254	L3f / Lxr	257	257	---	---
Excision of Promoter-Driven Cassette	5070-5074	Ef / Er	7300*	396**	---	180

* This PCR product will not be observed using our PCR genotyping conditions (see description below)

** This PCR is only verified if mice are generated

--- No Amplicon should be obtained

1.2. PCR protocol

This section describes the composition of the mix and cycling conditions used for genotyping.

Reagents:

- FastStart PCR Master (Roche)
- DNA (50ng/μl)
- 5' primer (100 μM)
- 3' primer (100 μM)
- Sterile H₂O

Volume:

- 7.5μl
- 1.5μl
- 0.06μl
- 0.06μl
- up to 15 μl

Cycling conditions:

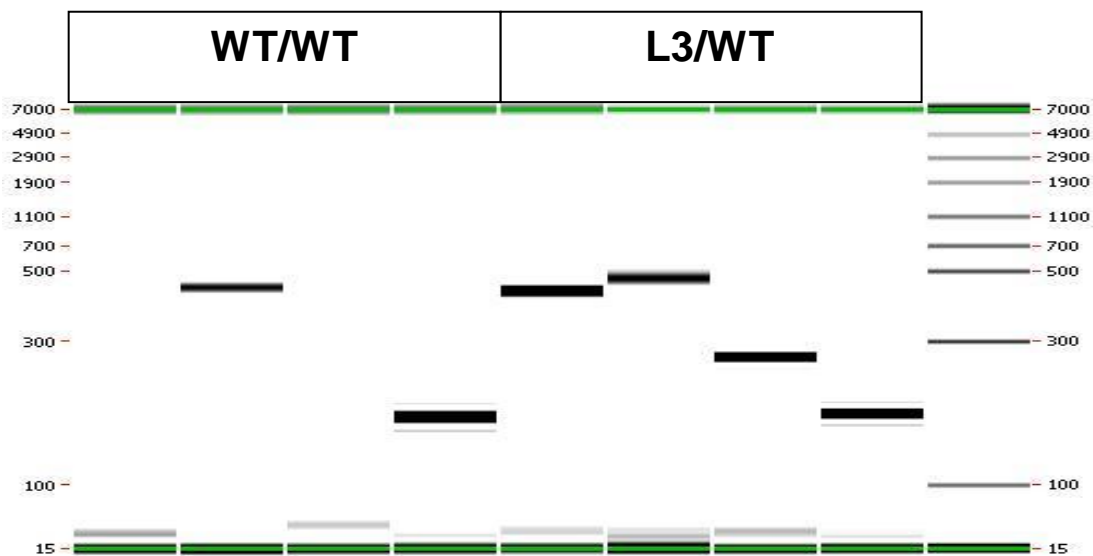
Temp	Time	#Cycles
95°C	4min	1
94°C	30s	34
62°C	30s	
72°C	1min	
72°C	7min	1
20°C	5 min	1

NB: These PCR conditions have been optimized for high-throughput genotyping. Adaptation to small-scale may be required.

1.3. Picture of genotyping with various alleles

Analysis of PCR products pattern was not done by gel electrophoresis but using LabChip® 90 microfluidic apparatus. PCR products were run on the HT DNA 5K LabChip® 90 Assay Kit.

Representative genotyping picture



Note that as this technology is more sensitive than gel analysis, non specific signals and/or primer dimers may be visible on the picture.

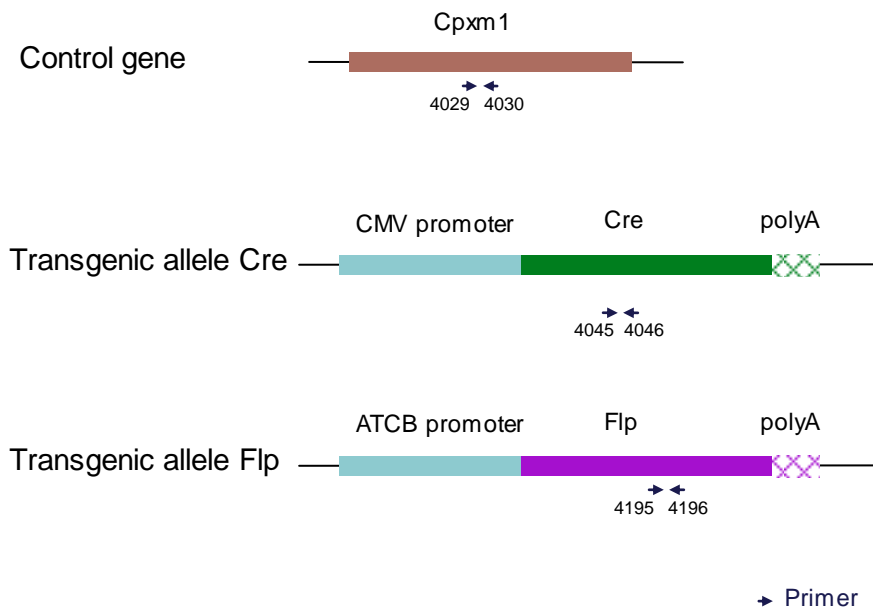
2. Cre and Flp genotyping method

The protocol used to segregate the cre and/or flp transgene is indicated below.

Detection of cre transgene and flp transgene is done using a multiplex assay: primer pairs were designed for each gene and for a positive control (Cpxm1 gene).

2.1. Cre and Flp genotyping

Schematic representation of the genotyping strategy



Sequence of primers used for genotyping:

Primers	Sequence
4029	ACTGGGATCTTCGAACTCTTTGGAC
4030	GATGTTGGGGCACTGCTCATTACACC
4045	CCATCTGCCACCAGCCAG
4046	TCGCCATCTTCCAGCAGG
4195	TCTTTAGCGCAAGGGGTAGGATCG
4196	GTCCTGGCCACGGCAGAAGC

PCR fragments expected size (bp):

Primer pair	4045-4046	4195-4196	4029-4030
Region analyzed	Middle part of Cre transgene	Middle part of Flp transgene	Cpxm1 control gene
Control gene	/	/	446
Tg allele	281	328	/



Genotyping protocol

Arcn1 (IR00002790/ E117 ICS internal reference)

2.2. PCR protocol

This section describes the composition of the mix and cycling conditions used for genotyping.

Reagents:	Volume:
- FastStart PCR Master (Roche)	7.5 μ l
- DNA (50ng/ μ l)	1.5 μ l
- 5' primer (100 μ M)	0.05 μ l
- 3' primer (100 μ M)	0.05 μ l
- Sterile H ₂ O	up to 15 μ l

Cycling conditions are identical to those described in chapter 1.2

NB: These PCR conditions have been optimized for high-throughput genotyping. Adaptation to small-scale may be required.