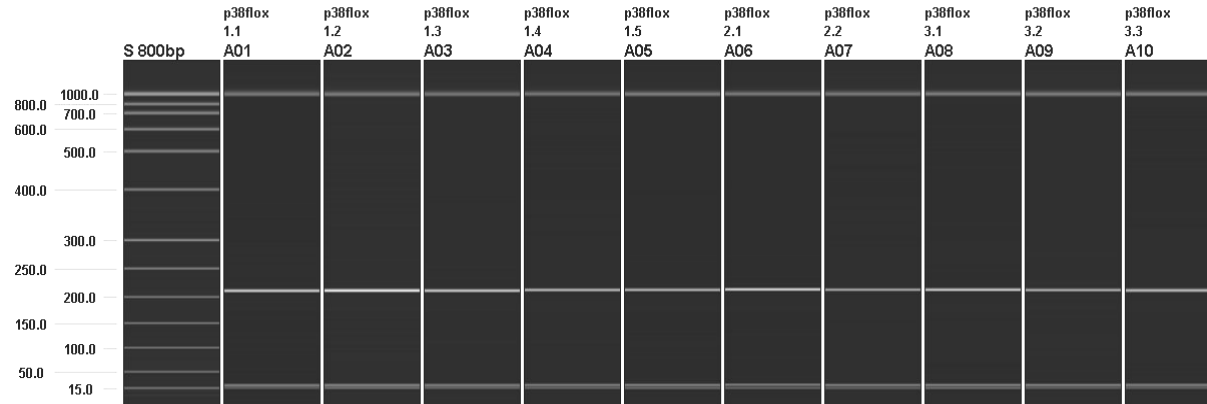
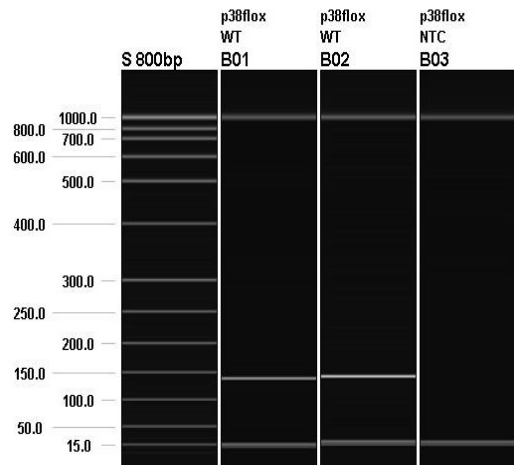


<..\..\Assay details\FESA\Mapk14tm2Nbr genotyping protocol.pdf>

Samples 1-10 Multiplex assay WT = 121 bp FLOXED = 188bp DELETED = 411 bp



WT, WT, NTC

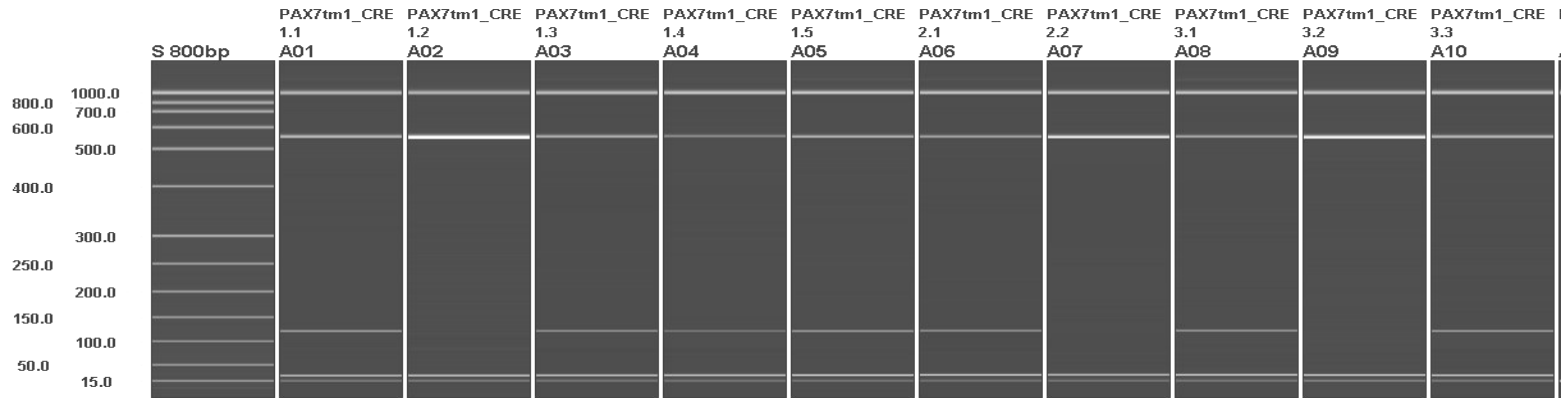


Origin 24 - From male 13.2 Cre +, mated with Cre- sister

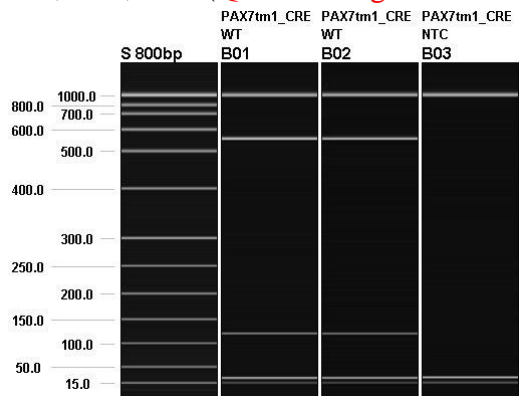
Origin 23 - From male 14.1 Cre +, mated with Cre- sister

http://jaxmice.jax.org/protocolsdb/f?p=116:2:0::NO:2:P2_MASTER_PROTOCOL_ID,P2_JRS_CODE:15850,010530

Samples 1-10 Multiplex assay CRE =100 bp WT =496bp



CRE,CRE,NTC (Qiaxcel image mis-labelled-CRE pos controls were used)



Origin 24 - From male 13.2 Cre +, mated with Cre- sister

Origin 23 - From male 14.1 Cre +, mated with Cre- sister

LightScanner Data Analysis

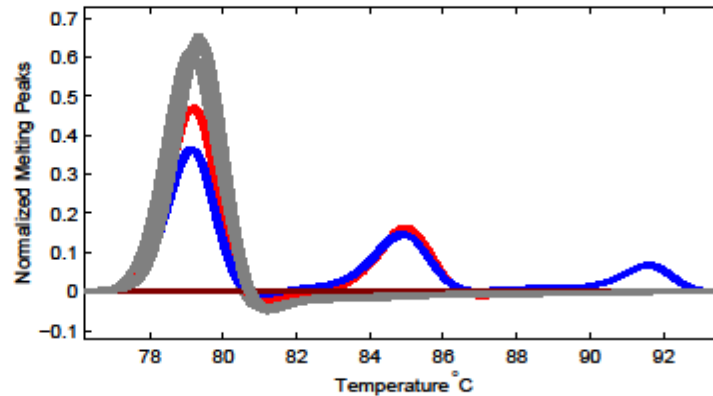
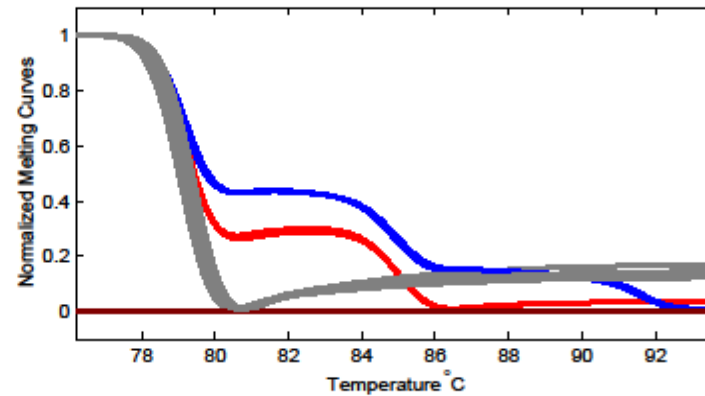
Run Parameters
 Melt Temperature Range: 63.3 – 98.4 Exposure: 137 (Auto)

Amplicon Genotyping Analysis Parameters
 Temperature Range: 76.2 – 93.7
 Standards: Auto group Sensitivity: Normal

Genotype Visual Summary

	1	2	3	4	5	6	7	8	9	10	11	12
A												
B												
C												
D												
E												
F												
G										S		
H	S	LAC Z	S	NEO	Negative							

WT
 LAC Z
 NEO
 Unknown
 Negative



Origin 24 - From male 13.2 Cre +, mated with Cre- sister

Origin 23 - From male 14.1 Cre +, mated with Cre- sister