



## Genotyping protocol

Mapt

IR00004164 / P4164

(ICS internal reference)

This report has been prepared by: **Valérie Rousseau**  
33 (0)3 88 65 56 55  
genotyping@igbmc.fr

This report has been validated by: **Sylvie Jacquot, PhD, Head of Genotyping Service**  
33 (0)3 88 65 57 44  
genotyping@igbmc.fr

The first version of this report was finalized the: 03 Sep 2013

For any question, please contact:

**Institut Clinique de la Souris - ICS - Mouse Clinical Institute**  
1 rue Laurent Fries, BP 10142  
67404 Illkirch Cedex, France  
Email: [genotyping@igbmc.fr](mailto:genotyping@igbmc.fr)  
Web site: <http://www-mci.u-strasbg.fr/>

## TABLE OF CONTENTS

**Table of contents .....2**

**1. Genotyping protocol and data .....2**

    1.1. Genotyping strategy .....2

    1.2. PCR protocol .....4

    1.3. Picture of genotyping with various alleles .....5

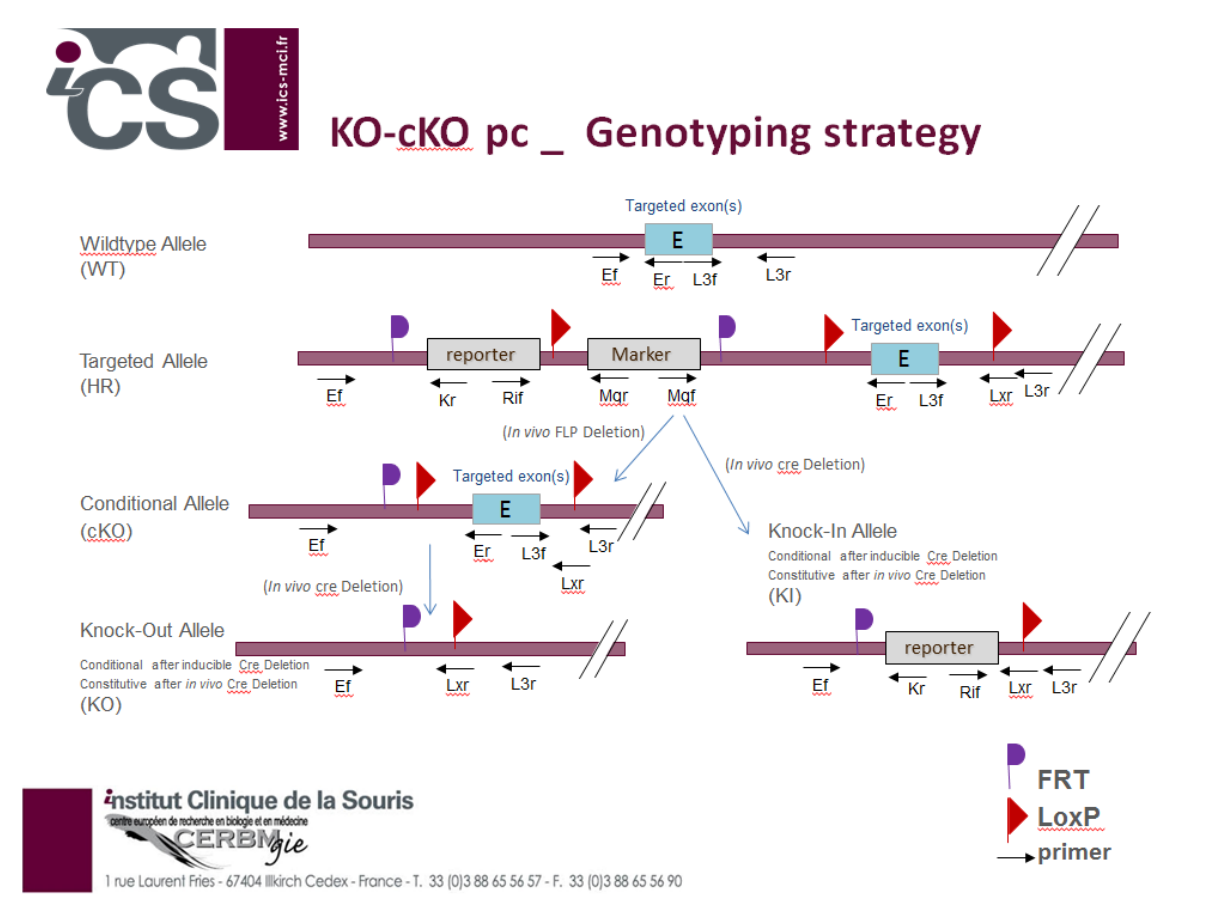
**2. Cre and Flp genotyping method .....6**

### 1. Genotyping protocol and data

This section describes the condition used at the Mouse Clinical Institute (ICS) to genotype your **Mapt** Constitutive Knockout / Conditional Knockout (KO-cKO) project.

#### 1.1. Genotyping strategy

The map below describes the position of the primers used for genotyping for each possible allele.



### Sequence of primers used for genotyping:

Position	Primers	Sequence
Ef	6979	TTGGCATGGTCAGCGTAAGATGG
Er	6982	GCTATAGCTTGATCATTGGATCAGG
Kr	3277	CTCCTACATAGTTGGCAGTGTGGG
L3f	6980	GTGTGGAGAGTGTGTGTCCTAGAG
L3r	6981	TCTTTGAGTGCTCACCCAGAATCCTC
Lxr	3255	ACTGATGGCGAGCTCAGACCATAAC
Ri1f	5966	GCACATGGCTGAATATCGACGGT

### PCR fragments expected size (bp):

Region analyzed	Primers used	Position on the primer (see the map above)	Targeted allele (KO allele) (L3)	cKO allele (L2)	KI allele (L-Lacz+)	KO allele (L-)	WildType allele (WT)
5' part of the selection marker	6979-3277	Ef / Kr	246	---	246	---	---
Presence of the distal loxP	6980-6981	L3f / L3r	316	316	---	---	324
Distal loxP specific PCR	6980-3255	L3f / Lxr	179	179	---	---	---
Excision of the selection marker	6979-6982	Ef / Er	7245*	341	---	---	194
Cre total excision	5966-3255	Ri1f / Lxr	---	---	471	---	---

\*: this PCR product will not be observed using our PCR genotyping conditions (see description below)

---: no Amplicon should be obtained

## 1.2. PCR protocol

This section describes the composition of the mix and cycling conditions used for genotyping.

Reagents:	Volume:
- FastStart PCR Master (Roche)	7.5µl
- DNA (50ng/µl)	1.5µl
- 5' primer (100 µM)	0.06µl
- 3' primer (100 µM)	0.06µl
- Sterile H <sub>2</sub> O	up to 15 µl

### Cycling conditions:

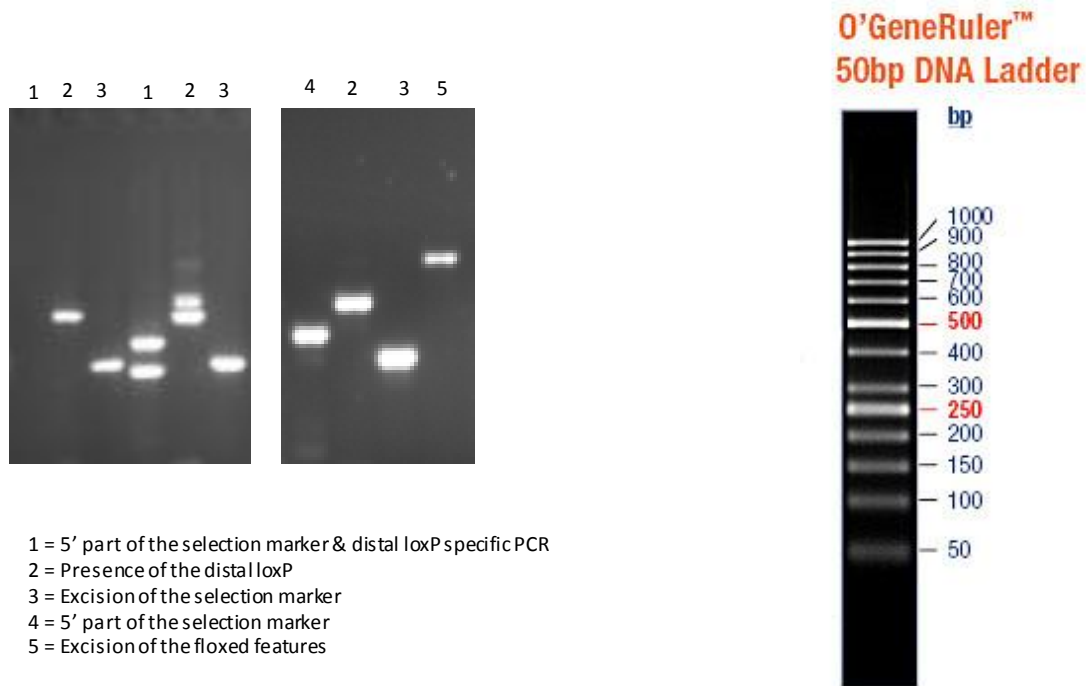
Temp	Time	#Cycles
95°C	4min	1
94°C	30s	34
62°C	30s	
72°C	1min	
72°C	7min	1
20°C	5min	1

**NB: These PCR conditions have been optimized for high-throughput genotyping. Adaptation to small-scale may be required.**

### 1.3. Picture of genotyping with various alleles

Analysis of PCR products pattern was done by gel electrophoresis 2% agarose (SB buffer).

#### Representative genotyping picture



## 2. Cre and Flp genotyping method

You will find the genotyping protocol in the publication:

[Highly-efficient, fluorescent, locus directed cre and FlpO deleter mice on a pure C57BL/6N genetic background.](#)

Birling MC, Dierich A, Jacquot S, Hérault Y, Pavlovic G.

Genesis. 2012 Jun;50(6):482-9. doi: 10.1002/dvg.20826. Epub 2012 Mar 20.