



Genotyping protocol

Rap1gap2

None / Rap1Gap2

(ICS internal reference)

This report has been prepared by: **Christelle Roth**
genotyping@igbmc.fr

This report has been validated by: **Sylvie Jacquot, PhD, Head of Genotyping Service**
33 (0)3 88 65 57 44
genotyping @igbmc.fr

The first version of this report was generated the: 12 Jul 2016

For any question, please contact:

Institut Clinique de la Souris - ICS - Mouse Clinical Institute

1 rue Laurent Fries, BP 10142

67404 Illkirch Cedex, France

Email: genotyping@igbmc.fr

Web site: <http://www-mci.u-strasbg.fr/>

Institut Clinique de la Souris

centre européen de recherche en biologie et en médecine

CERBM
gie

1 rue Laurent Fries - 67404 Illkirch Cedex - France - T. 33 (0)3 88 65 56 57 - F. 33 (0)3 88 65 56 90

TABLE OF CONTENTS

Table of contents.....2

1. Genotyping protocol and data.....2

 1.1. Genotyping strategy2

 1.2. PCR protocol.....4

 1.3. Picture of genotyping with various alleles5

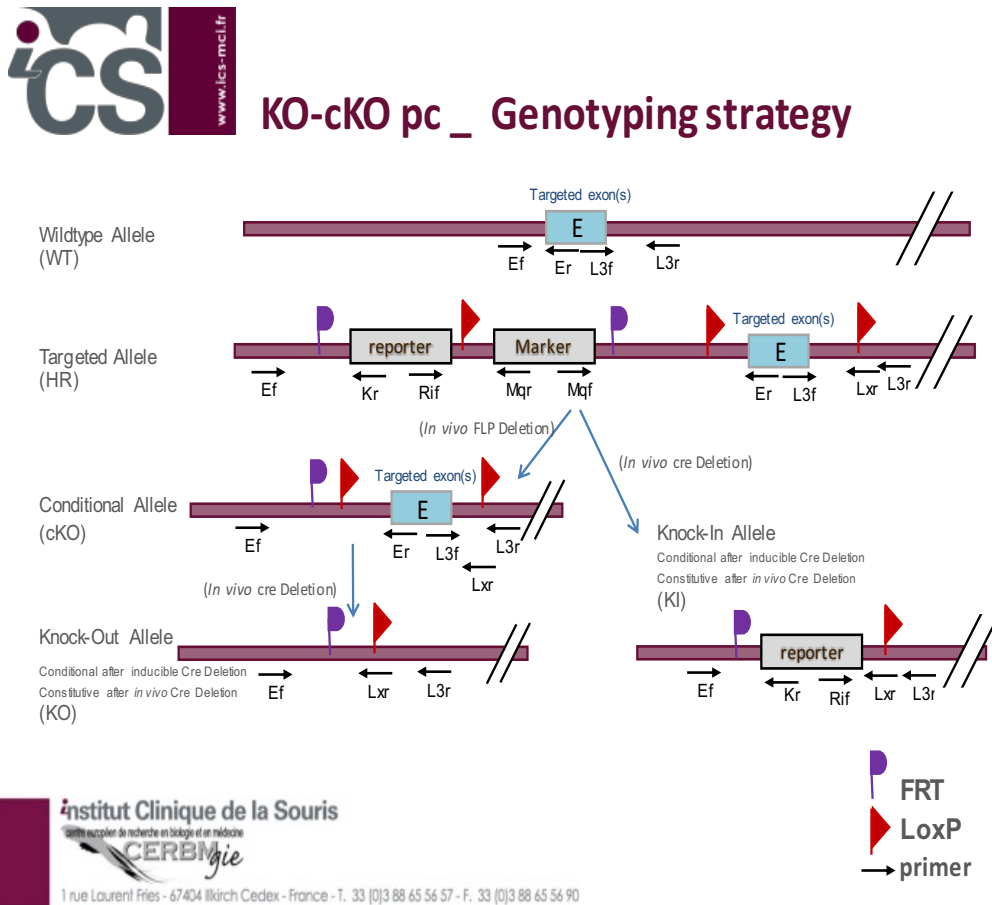
2. Cre and Flp genotyping method6

1. Genotyping protocol and data

This section describes the condition used at the Mouse Clinical Institute (ICS) to genotype your **Rap1gap2** Constitutive Knockout / Conditional Knockout (KO-cKO x Cre) project.

1.1. Genotyping strategy

The map below describes the position of the primers used for genotyping for each possible allele.



Sequence of primers used for genotyping:

Position	Primers	Sequence
Ef	9154	GTGCTAAATGAATCAGGGAACAGGC
Ef ²	9153	CCCATTCTAAAGCAGATTCCATCCC
Er ³	9158	TCTCCCAGTGCACCTGGGCTCAG
Kr	3277	CTCCTACATAGTTGGCAGTGTTTGGG
L3f	9156	CTTAGCAGTTGCCTCCATCTCCCTC
L3f ²	9155	CTTTGTCTTTGCCTAGATGGGGTGAG
L3r	9157	CCAGTAACGCATGTAGTGGCATGC
Lxr	3255	ACTGATGGCGAGCTCAGACCATAAC
Rif	5966	GCACATGGCTGAATATCGACGGT

²: for a selected position, a second primer was designed

PCR fragments expected size (bp):

Region analyzed	Primers used	Position on the primer (see the map above)	Targeted allele (HR)	conditional allele (cKO)	KI allele	WildType allele
5' part of the selection marker	9154-3277	Ef / Kr	299	---	---	---
Presence of the distal loxP	9156-9157	L3f / L3r	300	300	---	235
Distal loxP specific PCR	9155-3255	L3f ² / Lxr	167	167	---	---
Excision of the selection marker	9153-9158	Ef ² / Er ³	7246*	342	---	138
Cre total excision	5966-3255	Rif / Lxr	3119*	---	471**	---

*: this PCR product will not be observed using our PCR genotyping conditions (see description below)

** : this PCR is only verified if mice are generated

---: no Amplicon should be obtained

1.2. PCR protocol

This section describes the composition of the mix and cycling conditions used for genotyping.

Reagents:	Volume:
- FastStart PCR Master (Roche)	7.5µl
- DNA (50ng/µl)	1.5µl
- 5' primer (100 µM)	0.06µl
- 3' primer (100 µM)	0.06µl
- Sterile H ₂ O	up to 15 µl

Cycling conditions:

Temp	Time	#Cycles
95°C	4min	1
94°C	30s	34
62°C	30s	
72°C	1min	
72°C	7min	1
20°C	5min	1

NB: These PCR conditions have been optimized for high-throughput genotyping. Adaptation to small-scale may be required.

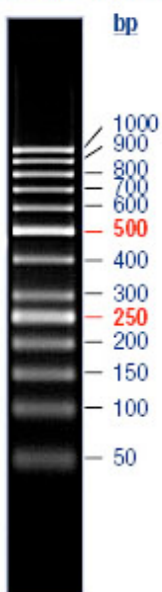
1.3. Picture of genotyping with various alleles

Analysis of PCR products pattern was done by gel electrophoresis 2% agarose (SB buffer).

Representative genotyping picture

_ADD_THE_PHOTO_

O'GeneRuler™ 50bp DNA Ladder



2. Cre and Flp genotyping method

You will find the genotyping protocol in the publication:

[Highly-efficient, fluorescent, locus directed cre and FlpO deleter mice on a pure C57BL/6N genetic background.](#)

Birling MC, Dierich A, Jacquot S, Hérault Y, Pavlovic G.
Genesis. 2012 Jun;50(6):482-9. doi: 10.1002/dvg.20826. Epub 2012 Mar 20.