

EMMA ID: 13499

Gene: *Neto2*

Common name: *Neto2-em1_4*

Allele: *Neto2*^{em1(IMPC)Hmgu}

Allele Information

For more information on production, guides and mutation, search for gene/project, go to project summary, go to production plan, go to production outcome and "more details"

<https://www.gentar.org>

IMPC mouse phenotype data, search by the gene name

<http://www.mousephenotype.org/>

Genotyping Information

Genotyping by end-point PCR based on gel is composed of a genespecific short range PCR using primers on wild type allele and a mutant allele-specific short range PCR. The combined results show the genotype of the mice. For example: mutant positive, wild type positive = Heterozygous. In addition to the expected product, the mutant assay may also amplify the endogenous wild type sequence, which will appear as a larger band on an agarose gel. The presence of this extra band will depend on the size of the original deletion.

PCR primer pairs and expected size bands

Assay	Forward Primer	Reverse Primer	Expected Size Band (bp)
Wild type	Neto2_F	Neto2_wtR	408/1273
Mutant	Neto2_F	Neto2_R	816

Primer sequences

Primer Name	Sequence 5' --> 3'
Neto2_F	tgtgccttgcattcacac
Neto2_R	tgtgaaagagctggtgtctac
Neto2_wtR	ccagattgccagtttgagctc

PCR setup (Qiagen, Hot Start Plus)

Component	Volume (μ l) 1x	Final conc.
DNA (~ 50-100 ng)	2	
Q-Solution (5x)	2,5	0,5
PCR-Buffer (10x)	2,5	1
DNTP mix (10 mM)	0,5	0,2
MgCl ₂ (25 mM)	1,5	1,5
Primer 1 (10 pmol/ μ l)	1	0,4
Primer 2 (10 pmol/ μ l)	1	0,4
Taq Polymerase (5 U/ μ l)	0,3	0,06
H ₂ O*	13,7	
Final volume	25	

* The amount of H₂O is adjusted with the number of primer.

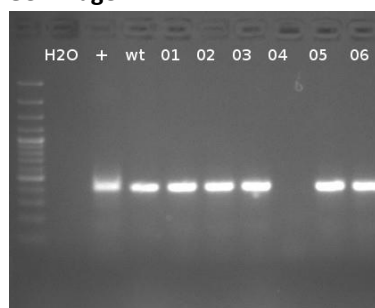
Amplification conditions

PCR Settings	Temperature ($^{\circ}$ C)	Time	# of cycles
1 Denaturation (Melting)	95 $^{\circ}$ C	5 min	1
2 Amplification (Melting, Annealing, Polym.)	94 $^{\circ}$ C	30 sec	39
	65-55 (\downarrow 1 $^{\circ}$ C/Cycle)	45 sec	
	72 $^{\circ}$ C	45 sec	
3 Polymerisation	72 $^{\circ}$ C	10 min	1
4 Cooling	4 $^{\circ}$ C	hold	1

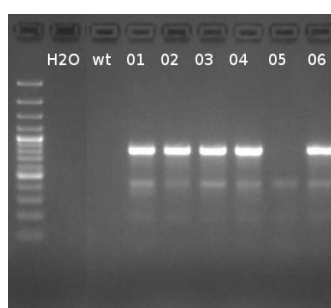
Touch-Down cycling protocol: first 10 cycles anneal at 65 $^{\circ}$ C, decreasing 1 $^{\circ}$ C per cycle, next 30 cycles anneal at 55 $^{\circ}$ C.

These PCR conditions have been optimized for our methods and preparation kits. Adaptions may be required.

Gel Image



WT-PCR



Mutant-PCR

Separated by gel electrophoresis on a 2% agarose gel.