

EMMA ID: 13580
Gene: *Bsph2*
Common name: *Bsph2-em1_11*
Allele: *Bsph2*^{em1(IMPC)Hmgu}

Allele Information

For more information on production, guides and mutation, search for gene/project, go to project summary, go to production plan, go to production outcome and "more details"

<https://www.gentar.org>

IMPC mouse phenotype data, search by the gene name
<http://www.mousephenotype.org/>

Genotyping Information

Genotyping by end-point PCR based on gel is composed of a genespecific short range PCR using primers on wild type allele and a mutant allele-specific short range PCR. The combined results show the genotype of the mice. For example: mutant positive, wild type positive = Heterozygous. In addition to the expected product, the mutant assay may also amplify the endogenous wild type sequence, which will appear as a larger band on an agarose gel. The presence of this extra band will depend on the size of the original deletion.

PCR primer pairs and expected size bands

Assay	Forward Primer	Reverse Primer	Expected Size Band (bp)
Wild type	Bsph2 2 G for	Bsph2_3rev 200	948/1558
Mutant	Bsph2_3for 100	Bsph2_3rev 200	429

Primer sequences

Primer Name	Sequence 5' --> 3'
Bsph2_3for 100	caccatgatagactgtctcctcatc
Bsph2_3rev 200	CTGGTTTTCACTCCCTTACTTGTTTCAT
Bsph2 2 G for	tgaacactgttctcagattaatccct

PCR setup (Qiagen, Hot Start Plus)

Component	Volume (µl) 1x	Final conc.
DNA (~ 50-100 ng)	2	
Q-Solution (5x)	2,5	0,5
PCR-Buffer (10x)	2,5	1
DNTP mix (10 mM)	0,5	0,2
MgCl ₂ (25 mM)	1,5	1,5
Primer 1 (10 pmol/µl)	1	0,4
Primer 2 (10 pmol/µl)	1	0,4
Taq Polymerase (5 U/µl)	0,3	0,06
H ₂ O*	13,7	
Final volume	25	

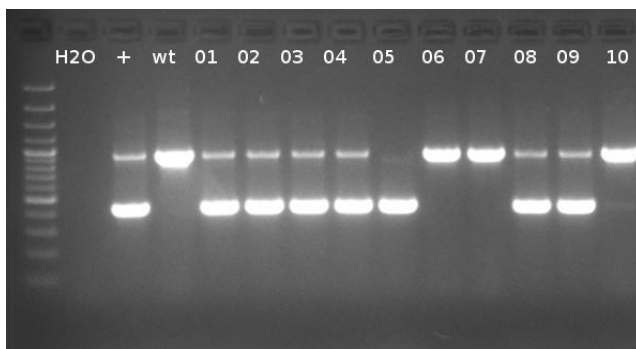
* The amount of H₂O is adjusted with the number of primer.

Amplification conditions

PCR Settings	Temperature (°C)	Time	# of cycles
1 Denaturation (Melting)	95°C	5 min	1
2 Amplification (Melting, Annealing, Polym.)	94°C	30 sec	39
	68-58 (↓1°C/Cycle)	45 sec	
	72°C	1.5 min	
3 Polymerisation	72°C	15 min	1
4 Cooling	4°C	hold	1

Touch-Down cycling protocol: first 10 cycles anneal at 68°C, decreasing 1°C per cycle, next 30 cycles anneal at 58°C.
 These PCR conditions have been optimized for our methods and preparation kits. Adaptions may be required.

Gel Image



Separated by gel electrophoresis on a 2% agarose gel.