

## F315

The F315 offers amazingly well defined mid-bass for installations; bringing new power, clarity and output to an important yet often neglected area of the frequency spectrum.

Utilising similar bass loading technology to Funktion-One's highly regarded F215MkII and F218MkII, with a high performance driver specification and an overall tuning for more impact; the F315 delivers outstanding mid/upper bass performance.

Adding the extra 15" driver, compared to a standard F215 MkII, not only gives 50% more power but the unique complement of 3 drivers to 2 horns unifies this power in an extremely coherent manner. The F315 can be ideally combined with other Funktion-One bass enclosures such as the F124, F221 or BR221 and mid-high enclosures such as the DS210 or Evo series.

### Features:

- Slimline cabinet for installation flexibility
- Fully horn loaded for high efficiency
- Advanced loudspeaker driver design
- Integral Handles
- Integral M10 flypoints
- Optional internal studding for suspending with mid-high loudspeakers (specified on order)
- All drivers connected in parallel to NL4 +1/-1

Frequency Response (-3dB):

60Hz - 250Hz

Weight:

81kg (178lbs)

Nominal Dispersion:

N/A

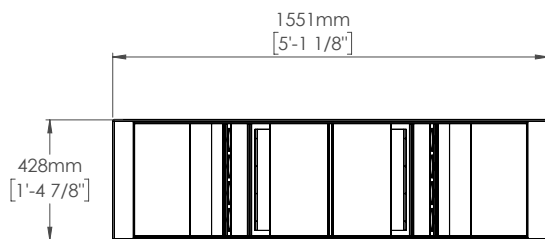
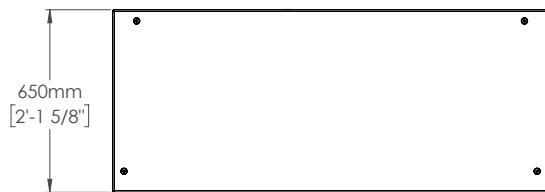
Connectors:

1 x Neutrik NL4

Driver	Crossover Frequencies	Sensitivity (at 1m)*	Power (AES)	Nominal Impedance
3 x 15"	85Hz - 220Hz	101dB at 1.6V	1200W	2.7Ω

\*Measured in half space

Specific crossover settings can be found at [www.funktion-one.com/support](http://www.funktion-one.com/support)



428mm  
[1'-4 7/8"]

16 x M10 fly points

