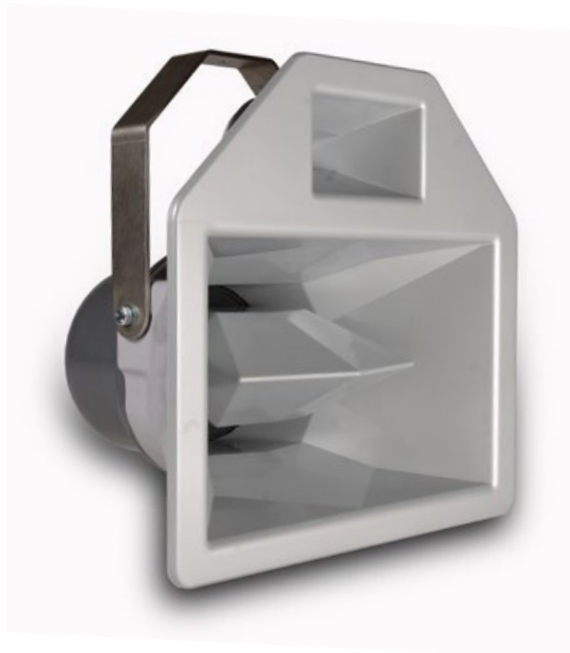


## RES 2SH

The Res 2SH skeletal loudspeaker is the mid-high section of a Res 2, producing high output for its compact size and low weight.

Operating upwards from 250Hz it can either be used in conjunction with Funktion-One bass enclosures such as the F118, F215 or BR118 as a small system in its own right, or used very effectively as in-fill or delays in larger systems.



**Features:**

- Passive crossover (only one amplifier channel required)
- Funktion-One designed drivers
- Includes stainless steel mounting yoke
- Stainless steel bolts for install or lever bolts for touring
- 100V line and fire retardant versions available

Frequency Response (-3dB): 250Hz - 18kHz  
 Weight: 13kg (29lbs)  
 Nominal Dispersion: 50° Horizontal x 25° Vertical  
 Connectors: 2 x Neutrik NL4

Driver	Crossover Frequencies	Sensitivity (at 1m)*	Power (AES)	Nominal Impedance
8" + 1"	250Hz - Up	106dB at 4V	200W	16Ω

\*Measured in free field

Specific crossover settings can be found at [www.funktion-one.com/support](http://www.funktion-one.com/support)

